

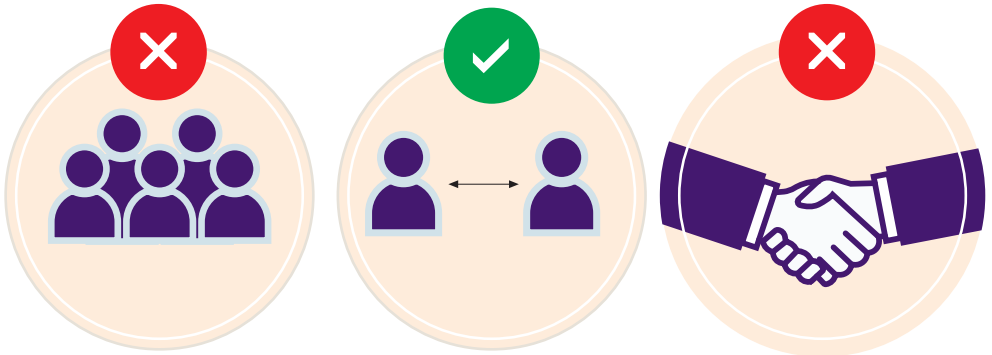


## **GUIDELINES FOR LABORATORY OPERATIONS POST COVID-19 MOVEMENT CONTROL ORDER (MCO)**

### **1. PRACTICE SOCIAL DISTANCING**

- Only one (1) person is allowed to work within 1.5 square meter area.
- Number of staff/students allowed in the laboratory is 30% of the original capacity.
- Working in a group is not allowed.

### **2. AVOID HANDSHAKING AND PHYSICAL CONTACT.**



<https://www.who.int/emergencies/diseases/novel-coronavirus-2019/technical-guidance/guidance-for-schools-workplaces-institutions> (Getting your workplace ready for COVID-19)

<https://www.moh.gov.my/index.php/pages/view/2269?mid=760>  
(Annex 25-COVID guide for workplaces)

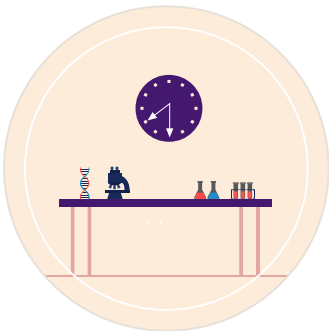
**NOTE:**

- This post COVID-19 MCO guideline **SHOULD NOT BE TAKEN AS A PERMISSION** by The Division of Research & Innovation for staff/students to access the laboratory. Approval for entering a laboratory can **ONLY** be given by the USM Nerve Centre or the Top Management/ Head of Department.
- This guideline can be amended from time to time subjected to USM Top Management and instructions from the Ministry of Higher Education.



## **GUIDELINES FOR LABORATORY OPERATIONS POST COVID-19 MOVEMENT CONTROL ORDER (MCO)**

- 3. LABORATORY IS OPEN FROM 8.30 AM - 5.00 PM ONLY.**
- 4. ENSURE ALL STUDENTS/STAF HAVE COMPLETED THE DAILY HEALTH SCREENING FOR COVID-19 SYMPTOMS FORM, CARRIED OUT TEMPERATURE CHECKS AND HAVE THEIR ATTENDANCE RECORDED IN A LOGBOOK.**
  - **Those with body temperature above 37.5 Celsius are not allowed to enter.**
  - **A schedule for laboratory use has to be prepared by the PTJ.**
  - **Attendance in the laboratory must follow the schedule provided.**



<https://www.who.int/emergencies/diseases/novel-coronavirus-2019/technical-guidance/guidance-for-schools-workplaces-institutions> (Getting your workplace ready for COVID-19)

<https://www.moh.gov.my/index.php/pages/view/2269?mid = 760>  
(Annex 25-COVID guide for workplaces)

**NOTE:**

- This post COVID-19 MCO guideline **SHOULD NOT BE TAKEN AS A PERMISSION** by The Division of Research & Innovation for staff/students to access the laboratory. Approval for entering a laboratory can **ONLY** be given by the USM Nerve Centre or the Top Management/ Head of Department.
- This guideline can be amended from time to time subjected to USM Top Management and instructions from the Ministry of Higher Education.



**GUIDELINES FOR LABORATORY OPERATIONS**  
**POST COVID-19 MOVEMENT CONTROL ORDER (MCO)**

- 5. ANYONE SHOWING SIGNS OF FLU/ COUGH SYMPTOMS OR DIFFICULTY IN BREATHING WILL NOT BE ALLOWED TO ENTER THE LABORATORY.**
- 6. PROVIDE AND USE HAND SANITIZERS AT THE ENTRANCE AND EXIT OF THE LABORATORY.**



<https://www.who.int/emergencies/diseases/novel-coronavirus-2019/technical-guidance/guidance-for-schools-workplaces-institutions> (Getting your workplace ready for COVID-19)

<https://www.moh.gov.my/index.php/pages/view/2269?mid=760>  
(Annex 25-COVID guide for workplaces)

**NOTE:**

- This post COVID-19 MCO guideline **SHOULD NOT BE TAKEN AS A PERMISSION** by The Division of Research & Innovation for staff/students to access the laboratory. Approval for entering a laboratory can **ONLY** be given by the USM Nerve Centre or the Top Management/ Head of Department.
- This guideline can be amended from time to time subjected to USM Top Management and instructions from the Ministry of Higher Education.



**GUIDELINES FOR LABORATORY OPERATIONS**  
**POST COVID-19 MOVEMENT CONTROL ORDER (MCO)**

- 7. WEAR A FACE MASK.**
- 8. MONITOR STUDENTS MOVEMENT AND ENSURE EACH LAB IS NOT ATTENDED BY TOO MANY STUDENTS AT ONE TIME.**



<https://www.who.int/emergencies/diseases/novel-coronavirus-2019/technical-guidance/guidance-for-schools-workplaces-institutions> (Getting your workplace ready for COVID-19)

<https://www.moh.gov.my/index.php/pages/view/2269?mid=760>  
(Annex 25-COVID guide for workplaces)

**NOTE:**

- This post COVID-19 MCO guideline **SHOULD NOT BE TAKEN AS A PERMISSION** by The Division of Research & Innovation for staff/students to access the laboratory. Approval for entering a laboratory can **ONLY** be given by the USM Nerve Centre or the Top Management/ Head of Department.
- This guideline can be amended from time to time subjected to USM Top Management and instructions from the Ministry of Higher Education.



**GUIDELINES FOR LABORATORY OPERATIONS**  
**POST COVID-19 MOVEMENT CONTROL ORDER (MCO)**

- 9. DISCUSSIONS INVOLVING MORE THAN TWO (2) PEOPLE ARE NOT ALLOWED.**
- 10. DISPLAY POSTERS ON SOCIAL DISTANCING AND PERSONAL HYGIENE GUIDELINES IN THE LABORATORY.**



<https://www.who.int/emergencies/diseases/novel-coronavirus-2019/technical-guidance/guidance-for-schools-workplaces-institutions> (Getting your workplace ready for COVID-19)

<https://www.moh.gov.my/index.php/pages/view/2269?mid=760>  
(Annex 25-COVID guide for workplaces)

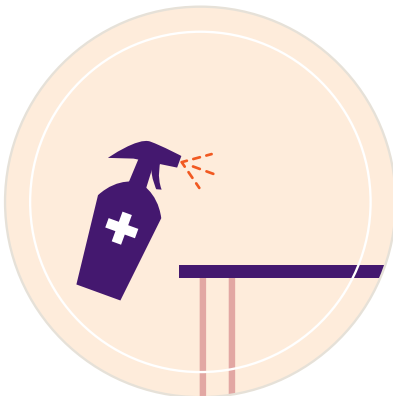
**NOTE:**

- This post COVID-19 MCO guideline **SHOULD NOT BE TAKEN AS A PERMISSION** by The Division of Research & Innovation for staff/students to access the laboratory. Approval for entering a laboratory can **ONLY** be given by the USM Nerve Centre or the Top Management/ Head of Department.
- This guideline can be amended from time to time subjected to USM Top Management and instructions from the Ministry of Higher Education.



**GUIDELINES FOR LABORATORY OPERATIONS  
POST COVID-19 MOVEMENT CONTROL ORDER (MCO)**

- 11. CLEAN WITH DISINFECTANTS ALL FREQUENTLY TOUCHED SURFACES (DOORKNOBS, DESKS, CHAIRS, ETC.)**
- 12. RANDOM INSPECTIONS (SPOT CHECKS) WILL BE DONE: ENSURE THIS SOP FOR LABORATORY USE POST MCO COVID-19 IS ADHERED TO. IF NOT, LABORATORY OPERATIONS CAN BE STOPPED IMMEDIATELY.**



<https://www.who.int/emergencies/diseases/novel-coronavirus-2019/technical-guidance/guidance-for-schools-workplaces-institutions> (Getting your workplace ready for COVID-19)

<https://www.moh.gov.my/index.php/pages/view/2269?mid=760>  
(Annex 25-COVID guide for workplaces)

**NOTE:**

- This post COVID-19 MCO guideline **SHOULD NOT BE TAKEN AS A PERMISSION** by The Division of Research & Innovation for staff/students to access the laboratory. Approval for entering a laboratory can **ONLY** be given by the USM Nerve Centre or the Top Management/ Head of Department.
- This guideline can be amended from time to time subjected to USM Top Management and instructions from the Ministry of Higher Education.



## **GUIDELINES FOR LABORATORY OPERATIONS POST COVID-19 MOVEMENT CONTROL ORDER (MCO)**

- 13. VISITORS, SUPPLIERS OR INDUSTRY PARTNERS ARE NOT ALLOWED TO ENTER THE LABORATORY.**
- 14. THE HEAD OF DEPARTMENT MAY IMPOSE ADDITIONAL REGULATIONS CONSIDERED APPROPRIATE.**



<https://www.who.int/emergencies/diseases/novel-coronavirus-2019/technical-guidance/guidance-for-schools-workplaces-institutions> (Getting your workplace ready for COVID-19)

<https://www.moh.gov.my/index.php/pages/view/2269?mid=760>  
(Annex 25-COVID guide for workplaces)

**NOTE:**

- This post COVID-19 MCO guideline **SHOULD NOT BE TAKEN AS A PERMISSION** by The Division of Research & Innovation for staff/students to access the laboratory. Approval for entering a laboratory can **ONLY** be given by the USM Nerve Centre or the Top Management/ Head of Department.
- This guideline can be amended from time to time subjected to USM Top Management and instructions from the Ministry of Higher Education.